

naviblef®

DAILY CARE

EN **EYELID FOAM.**
FOR OCULAR SECRETIONS CLEANSING.

For external use only

COMPOSITION

Melaleuca Alternifolia Oil (Tea Tree Oil), Antheris Nobilis Oil (Camomile Oil), D-Panthenol, Allantoin, Taurine and purified Water.

DESCRIPTION AND INDICATIONS

If you have dry, scratchy, or irritated eyes, the problem may not be your eyes, but rather your eyelids. Maintaining daily hygiene of your eyelids and eyelashes with NAVIBLEF® DAILY CARE provides many benefits including the reduction of these symptoms. NAVIBLEF® DAILY CARE effectively removes excessive oil, pollen, and other debris from the eyelids which increase the risk of irritation, blepharitis due to the presence of Demodex (eyelid mites) and bacterial infestations or dry eye symptoms.

NAVIBLEF® DAILY CARE is recommended to be used as maintenance care, for patients that have followed the blepharitis treatment with NAVIBLEF® DAILY CARE.

PACKAGING

Bottle of 50 ml with a pump dispenser [REF] F50ND188
Bottle of 5 ml with a pump dispenser [REF] F5ND187

PROPERTIES

NAVIBLEF® DAILY CARE is a non-greasy and non-irritant formulation, for topical use.

WHAT IS BLEPHARITIS?

It is a chronic inflammation of the eyelids and is one of the most common disorders of the eye. This is often the main cause of eye discomfort, redness and tearing. Other eye symptoms of blepharitis include burning, itching, light sensitivity and irritation, sandy and gritty sensation that is more accentuated upon awakening.

WHAT IS DRY EYE?

It is known as a disorder of the tear film due to tear deficiency or excessive tear evaporation, which can cause damage to the interpalpebral and ocular surface.

IN CASE OF EYE SURGERY

Before or after eye surgery, there is a risk of infections on the eyelids and eyelashes so it is important to follow the recommendations of your eye specialist with regard to the hygiene and care to follow.

Distributor in the UK:
VISUfarma International,
2405, route Des Dolines - Drakkar D,
06560 Valbonne, FRANCE

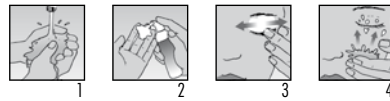


NOVAX® PHARMA
Le Coronado - 20, Av. de Fontvieille
MC 98000 MONACO
www.novaxpharma.com

V1 - Rev. 25-03-2016



DIRECTIONS FOR USE



- 1 - Before the application of the foam, wash your hands and then clean the fingertips with NAVIBLEF® DAILY CARE.
- 2 - Press the delivery pump and place the foam on the clean fingertips. When used before or after surgery it is recommended to place the foam on sterile gauze.
- 3 - Close the eye and massage the eyelid and eyelashes with NAVIBLEF® DAILY CARE. Do not touch or open the eyes during the application. Leave the foam for approximately 60 to 80 seconds.
- 4 - After each application rinse the eyelashes and eyelids with warm water.

Note: Repeat the same steps for the other eye.

Repeat this treatment 2 - 3 times a day for long-term maintenance and hygiene of eyelids and eyelashes.

PRECAUTIONS

- Always wash your hands before and after use.
- Remove contact lenses before the application of the foam. Ensure all foam residue is removed before re-inserting lenses.
- Keep your eyes closed during the application
- The product is intended for the application on eyelids and eyelashes. Do not apply directly in the eyes.
- For external use only.
- Keep out of the sight and reach of children.
- Do not use for children under 3 years.
- Use hypoallergenic eye makeup and delicate skin lotions around your eyes during the use.
- Do not use in case of known hypersensitivity to one of the constituents of the product.
- If irritation occurs, stop use immediately, rinse your eyes with water and contact your eye specialist if the irritation continues.
- Discard remaining solution within 6 months after first opening.
- Do not use after the expiry date.

STORAGE

- Store the product in a dry place between 5 and 35°C.

FR

PRÉSENTATIONS : NAVIBLEF® existe en 2 formulations :

- NAVIBLEF® INTENSIVE CARE pour éliminer les sécrétions sévères et squames dus aux infections causées par les bactéries et Demodex (boîte rouge).
- NAVIBLEF® DAILY CARE pour l'hygiène quotidienne à long terme et la prévention des sécrétions oculaires et squames dus aux infections causées par les bactéries et Demodex (boîte bleue).

DE

DARREICHUNGSFORMEN: NAVIBLEF® gibt es in zwei Formulierungen:

- NAVIBLEF® INTENSIVE CARE für die Entfernung starker Verunreinigungen und Sekrete aufgrund von durch Bakterien und Demodex verursachten Infektionen (rote Verpackung).
- NAVIBLEF® DAILY CARE für die langfristige tägliche Hygiene und Vorbeugung vor Verunreinigungen und Sekreten aufgrund von durch Bakterien und Demodex verursachten Infektionen (blaue Verpackung).

EN

PRESENTATIONS: NAVIBLEF® is presented in two formulations:

- NAVIBLEF® INTENSIVE CARE to eliminate severe ocular secretions and debris due to infections caused by bacteria and Demodex (Red box).
- NAVIBLEF® DAILY CARE for long term daily hygiene and prevention of ocular secretions and debris due to infections caused by bacteria and Demodex (Blue box).